

Premium Assortment



LILJEHOLMENS
STEARINFABRIK



Life shines

At Liljeholmens Stearinfabrik we make candles. But not only. Moreover, we make sure to keep an old craft alive and devote energy to spreading light in a country where the winter is both long, dark, and cold.

But not only. Moreover, we make parties a little more festive and comfort those who feel sad. We speed up the romance and help keep it alive. We make people unwind. And emotions to bubble up. We get food to taste better and Christmas to become more enjoyable.

We make the summer evening brighter. And the winter night softer. We make the Friday coziness cozier and the weekend breakfast more luxurious. We make the conversations more intimate and the silence even more restful.

We make people forget. And people to remember. We make the candles even more beautiful. And life a little bit brighter. Even when it is dark.





Content

1. About Liljeholmens Stearinfabrik

9	History
11	A sustainable company
13	Craftmanship & Quality
15	Purveyor to the Royal Court

2. Collection

19	Prismaljus
20	Kupéljus
23	Annaljus

3. Product index

26	Prismaljus
	Kupéljus
27	Annaljus

3. Facts

28	Materials
31	Certifications



About Liljeholmens Stearinfabrik

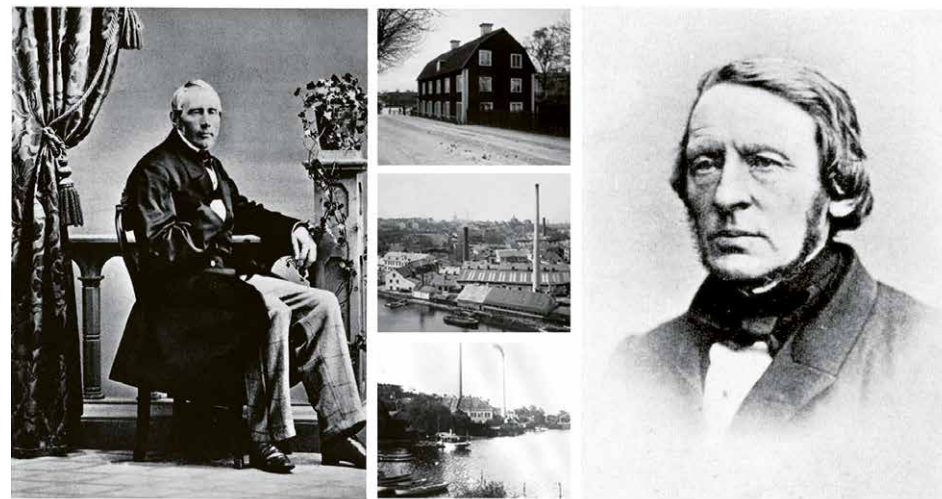
History

Embark on a captivating journey through Liljeholmens Stearinfabriks' history, tracing the introduction of stearin candles to Sweden, their evolution into a vital light source, and their role in shaping the ambiance of everyday life and celebratory moments.

In 1837, Lars Johan Hierta, an enterprising figure in Swedish media, discovered stearin candles in London. Enchanted by their smokeless, drip-free nature and the pleasant light they emitted, Hierta and chemist Johan Michaëlsen pioneered stearin production in Sweden. In 1839, Liljeholmens Tekniska Fabrik was born. The initial factory on Liljeholmen in Stockholm marked the inception, with candles initially sold from Aftonbladet's editorial office. By 1841, recognizing the need for expansion, the factory relocated to Danvikstull on the south side of Stockholm.

In the early 20th century, the widespread adoption of gas and electricity, coupled with advancements in kerosene lamps, led to a decline in the use of stearin candles as a primary source of light. Despite this shift, stearin candles continued to impart a festive ambiance to the Christmas dinner table. Facing this evolving landscape, Liljeholmens Stearinfabrik adapted to the changing market by diversifying its product range, including lubricating oil for the Swedish railway company.

However, the 1960s sparked a renaissance for candles due to renewed interest in using candles at home and in public places, leading to Liljeholmens Stearinfabrik opening a custom-made factory in the picturesque surroundings of Oskarshamn in 1970. Nestled amidst beautiful landscapes and with access to water, Oskarshamn proved to be the perfect location for our new factory. The dedicated and skilled workers in this idyllic setting have played an integral role in the continued success and excellence of Liljeholmens Stearinfabrik. This journey stands as a testament to Liljeholmens Stearinfabriks' resilience and commitment to crafting exceptional candles in harmony with both nature and craftsmanship.



Johan Michaëlsen, J., 1816, d. 1874.
Johan L.J. Hierta fabriks grundläggare, Teknisk chef 1839–1846

LARS JOHAN HIERTA



A sustainable company

Liljeholmens Stearinfabrik actively embraces environmental responsibility, striving to optimize natural resources, enhance energy efficiency, and minimize emissions and waste throughout our processes. Sustainability is not merely a component but the core of Liljeholmens Stearinfabrik – a true dedication to both our production methods and product offerings.

In our commitment to sustainability, Liljeholmens Stearinfabrik has achieved significant milestones. Our operations are powered by 95% fossil-free energy, reflecting our commitment to reducing dependence on non-renewable resources. Furthermore, Liljeholmens Stearinfabrik relies entirely on 100%* wind power for electricity, emphasizing our dedication to clean and renewable energy sources.

99%* of our candle waxes are sourced from sustainable materials, reinforcing our commitment to using eco-friendly resources. Liljeholmens Stearinfabrik exclusively uses renewable stearin, rapeseed wax, and shea stearin in our candles, contributing to the preservation of valuable ecosystems. 95% of our consumer assortment proudly carries the Swan label, showcasing our dedication to meeting stringent environmental and quality standards.

We have made strides in reducing our environmental impact, with 75%* of our consumer packaging being plastic-free. This initiative aligns with our goal to minimize plastic use and contribute to a healthier planet. This commitment extends to our consumer packaging, with 100%* FSC-certified paper ensuring responsible forestry practices.

These examples represent Liljeholmens Stearinfabriks' ongoing efforts to integrate sustainability seamlessly into our operations, reflecting our dedication to environmental stewardship and responsible business practices. Continuing our journey, Liljeholmens Stearinfabrik remains steadfast in its commitment to minimize environmental impact, striving for a future where sustainability is not just a goal but an integral part of our enduring legacy.

(*Based on figures from 2024)



Craftmanship & Quality

In 1839, Liljeholmens Stearinfabrik embarked on the journey of crafting stearin candles, importing skills, methods, and machinery from various corners of the world. Over the years, within the walls of our Oskarshamn, Sweden factory, processes have not only been refined but have evolved to elevate the quality of our candles. The essence of our manufacturing method and craftsmanship remains unchanged, echoing the traditions from over 185 years ago. Achieving the pinnacle of candle quality demands the expertise of experienced and highly skilled artisans, coupled with the careful selection of raw materials.

Today, Liljeholmens Stearinfabrik proudly stands as the world's largest manufacturer of stearin candles and one of Sweden's enduring companies. With a dedicated workforce of approximately ninety individuals, our products are meticulously crafted using custom machinery designed to produce various candle types. Our stearin candles are meticulously shaped in molds, employing the same time-honored method since our inception in 1839.

Purveyor to the Royal Court of Sweden

In 1893, under the reign of Swedish King Oscar II, Liljeholmens Stearinfabrik received the prestigious appointment as Purveyor to the Royal Court of Sweden – a distinction maintained to this day. This honor has been bestowed upon Liljeholmens Stearinfabrik by four consecutive Swedish kings.

Being a Purveyor to the Royal Court is a distinguished recognition, symbolizing the appreciation of our products and services by a member of the Royal Family and the Royal Palace Administration. Liljeholmens Stearinfabrik proudly stands among approximately 130 Purveyors to the Royal Court.

The title of Purveyor to the Royal Court stands as an eminent hallmark of Swedish quality. It signifies that our products are esteemed, world-leading examples of top-class Scandinavian design, a testament to Liljeholmens Stearinfabriks' commitment to excellence over the years.



H.M. Queen Silvia and H.M. King Carl XVI Gustaf.

Photo: Bruno Ehrs, The Royal Court.



Collection



Prismaljus

100% Stearin

Ø21 x 280 mm | 8h | x4



We are delighted to reintroduce a classic Liljeholmens Stearinfabrik candle. Crafted from 100% molded stearin, dipped in colored wax, this timeless octagon-shaped beauty radiates the timeless charm of our heritage. Nordic Eco-label certified, Prisma brings Liljeholmens Stearinfabriks' tradition to life in a spectrum of colors, burning beautifully to elevate any setting.



White Dusty Grey Dusty Pink Sage Dove Blue Apricot Red Pine



Kupéljus

100% Stearin

White: Ø38 x 110 mm | 8h | x4
Colored: Ø39 x 110 mm | 8h | x4



With a rich history as a source of light in train compartments, Kupe’s timeless design remains popular today. Crafted from 100% molded stearin, dipped in colored wax, this candle effortlessly fits into tealight holders, sharing the same diameter as a tealight. Nordic Eco-label certified and available in various colors, Kupe seamlessly blends history with contemporary illumination.





Annaljus

100% Stearin

Ø39 x 360 mm | 49h | x1



Discover a downsized version of one of our classic church candle, tailor-made for homes. This elegant, self-extinguishing rendition is crafted from 100% molded stearin, infused with color, and certified by the Nordic Eco-label and RAL. Available in various colors, this exquisite centerpiece brings a touch of warmth to any space, making it an ideal gift for any occasion.



White Cream Dusty Grey Dusty Pink Sage Dove Blue Apricot Red Pine Calendar



Product index

Prismaljus

100% Molded Stearin

Dipped in colored wax
A unique, octagon-shaped candle
Burns beautifully



Size mm: Ø21 x H280 | Burn time: 8 h

	Color	Art. No.	Candles/pck	Pck/crt	Pck/pallet	EAN CODE	CRT CODE
	White	63866	4	10	1400	7330620638660	17330620638667
	Dusty Grey	63867	4	10	1400	7330620638677	17330620638674
	Dusty Pink	63868	4	10	1400	7330620638684	17330620638681
	Sage	63871	4	10	1400	7330620638714	17330620638711
	Dove Blue	63869	4	10	1400	7330620638691	17330620638698
	Apricot	63870	4	10	1400	7330620638707	17330620638704
	Red	63833	4	10	1400	7330620638332	17330620638339
	Pine	63872	4	10	1400	7330620638721	17330620638728

Kupéljus

100% Molded Stearin

Dipped in colored wax
Fits perfectly in a tealight candle holder



Size mm: Ø38 (white), Ø39 (colored) x 110 | Burn time: 8 h

	Color	Art. No.	Candles/pck	Pck/crt	Pck/pallet	EAN CODE	CRT CODE
	White	63873	4	6	960	7330620638738	17330620638735
	Dusty Grey	63874	4	6	960	7330620638745	17330620638742
	Dusty Pink	63875	4	6	960	7330620638752	17330620638759
	Sage	63878	4	6	960	7330620638783	17330620638780
	Dove Blue	63876	4	6	960	7330620638769	17330620638766
	Apricot	63877	4	6	960	7330620638776	17330620638773
	Red	63834	4	6	960	7330620638349	17330620638346
	Pine	63879	4	6	960	7330620638790	17330620638797

Annaljus

100% Molded Stearin

Colored through
Elegant centerpiece
Self-extinguishing



Size mm: Ø39 x H360 | Burn time: 49 h

	Color	Art. No.	Candles/pck	Pck/crt	Pck/pallet	EAN CODE	CRT CODE
	White	63858	1	6	252	7330620638585	17330620638582
	Cream	63853	1	6	252	7330620638530	17330620638537
	Dusty Grey	63855	1	6	252	7330620638554	17330620638551
	Dusty Pink	63856	1	6	252	7330620638561	17330620638568
	Sage	63857	1	6	252	7330620638578	17330620638575
	Dove Blue	63854	1	6	252	7330620638547	17330620638544
	Apricot	63852	1	6	252	7330620638523	17330620638520
	Red	63832	1	6	252	7330620638325	17330620638322
	Pine	63851	1	6	252	7330620638516	17330620638513
<div>2324</div>	Calendar	63880	1	6	252	7330620638806	17330620638803



Materials

At Liljeholmens Stearinfabrik, we welcome a sustainable future, anchored by our commitment to stearin.

Our choices are founded on the substantial advantages of stearin over its paraffin and soy counterparts. Locally sourced and renewable stearin not only boast a lower CO2 footprint but also seamlessly align with the principles of the EU Green Deal and Nordic eco-label standards, emerging as an eco-friendly alternative that effectively reduce carbon emissions, safeguard the rainforest, and contributes to a cleaner atmosphere.



100% Stearin

- Renewable material
- Resource-efficient
- Nordic Eco-label eligible
- Long, drip-free burning
- High, clear, stable flame





Our certification speaks for itself

The products in our collection are adorned with an esteemed environmental and quality certification, substantiating the sustainability and excellence of our offerings.

The Nordic Swan eco-label



This label identifies our products as the best on the market from an environmental perspective. For instance, it affirms that our stearin candles consist of 90% renewable materials, burn cleanly, and minimize soot emissions. The Swan also ensures adherence to specific criteria for quality and safety.

The RAL quality mark



Endorsed by the European Quality Association for Candles, this mark guarantees that our candles burn cleanly, are free from hazardous materials, retain their shape, and are safe and reliable.

The FSC certification



The Forest Stewardship Council® (FSC) certification ensures our packaging material and cartons are made of wood from forests managed in an environmentally appropriate, socially beneficial, and economically viable manner.



LILJEHOLMENS STEARINFABRIK

Liljeholmens Stearinfabriks AB
Box 905 • SE-572 29 Oskarshamn

liljeholmens.se
info@liljeholmens.se

Asp-Holmblad A/S
Liljeholmens Group

Slotsmarken 10, st.tv.
DK-2970 Hørsholm

asp-holmblad.dk
info@asp-holmblad.dk

Gies Kerzen GmbH
Liljeholmens Group

Beim Zeugamt 8
DE-21509 Glinde

gies-kerzen.de
sales@gies-kerzen.de

Promol - Indústria de velas, S.A.
Liljeholmens Group

Rua José Libânio, 2
Zona Industrial,
PT-2500-758 Caldas da Rainha

promolcandle.pt
loja@promol.pt